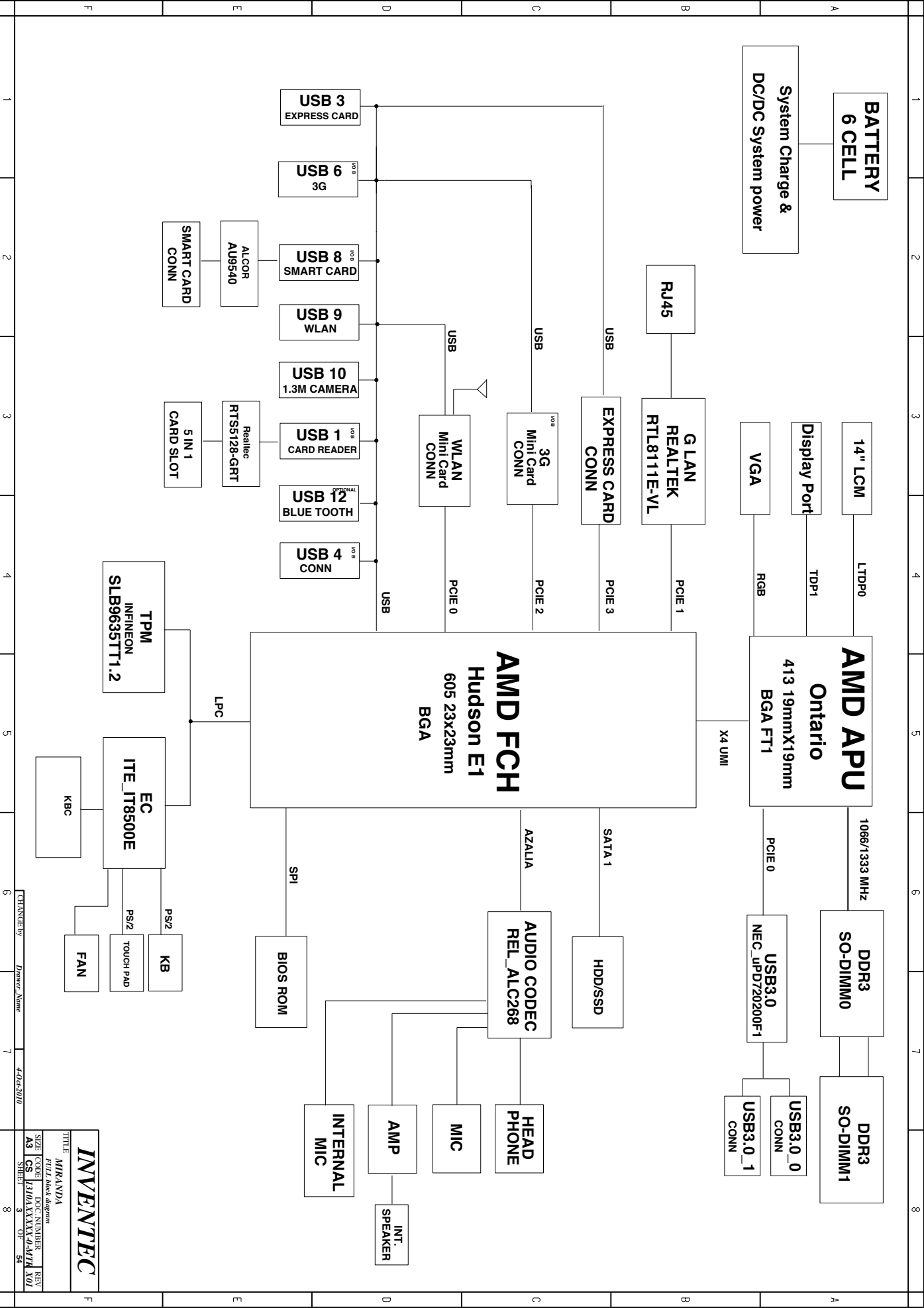


2010.10.25

<b>INVENTEC</b>			
DRIVER	DATE	POWER	DATE
DESIGN			
CHECK			
RESPONSIBLE			
SPE = 1			
FILE NAME: XXXX XXXXX.XX		VER.	
PN: XXXXXXXXXX			
TITLE <b>MIRANDA</b>			
COL FOR NAME			
SIZE	CON	NUMBER	REV
A3	CS	1310XXXXXX-4-MIR.X01	
SHEET	1 OF 54		

TABLE OF CONTENTS							
PAGE		PAGE		PAGE			
1. COVER PAGE	20. FCH1	I/O BOARD					
2. INDEX	21. FCH2	40. CODEC REL_ALC268					
3. BLOCK DIAGRAM	22. FCH3	41. AUDIO JACK					
4. POWER BLOCK DAIGRAM	23. FCH4	42. AMP / INT. SPEAKER					
5. POWER ON SEQUENCE	24. STRAP OPTION / THERMAL / RTC	43. WWAN					
6. POWER ON SEQUENCE	25. LCM	44. SMART CARD AU9540					
7. POWER CHARGE/DC IN	26. CRT	45. CARD READER					
8. POWER BATTERY	27. DP	46. GIGA LAN					
9. POWER +V3LA/+V3A/+V5A	28. WLAN / BT	47. RJ45					
10. POWER +V1.8S/+V0.75S/+V1.5	29. TPM	48. USB CONN					
11. POWER +V1.1A/+V1A/+V1.1S	30. SSD / HDD	49. WIRE to BOARD CONN (I/O/B SIDE)					
12. POWER VCORE/VCORE_NB	31. IT8500E	TP BOARD					
13. POWER +V5S/+V3S/+V1.1S	32. KB/TP CONN	50. TP / HALL-SENSOR					
14. APU FT1 1	33. USB3.0 CONTROLLER	POWER BOARD					
15. APU FT1 2	34. USB3.0 CONN	51. POWER SW					
16. APU FT1 3	35. SIM CARD						
17. APU FT1 4	36. EXPRESS CARD						
18. DDR3-1	37. FAN CONN						
19. DDR3-2	38. WIRE to BOARD CONN (MB SIDE)						
	39. SCREWS						

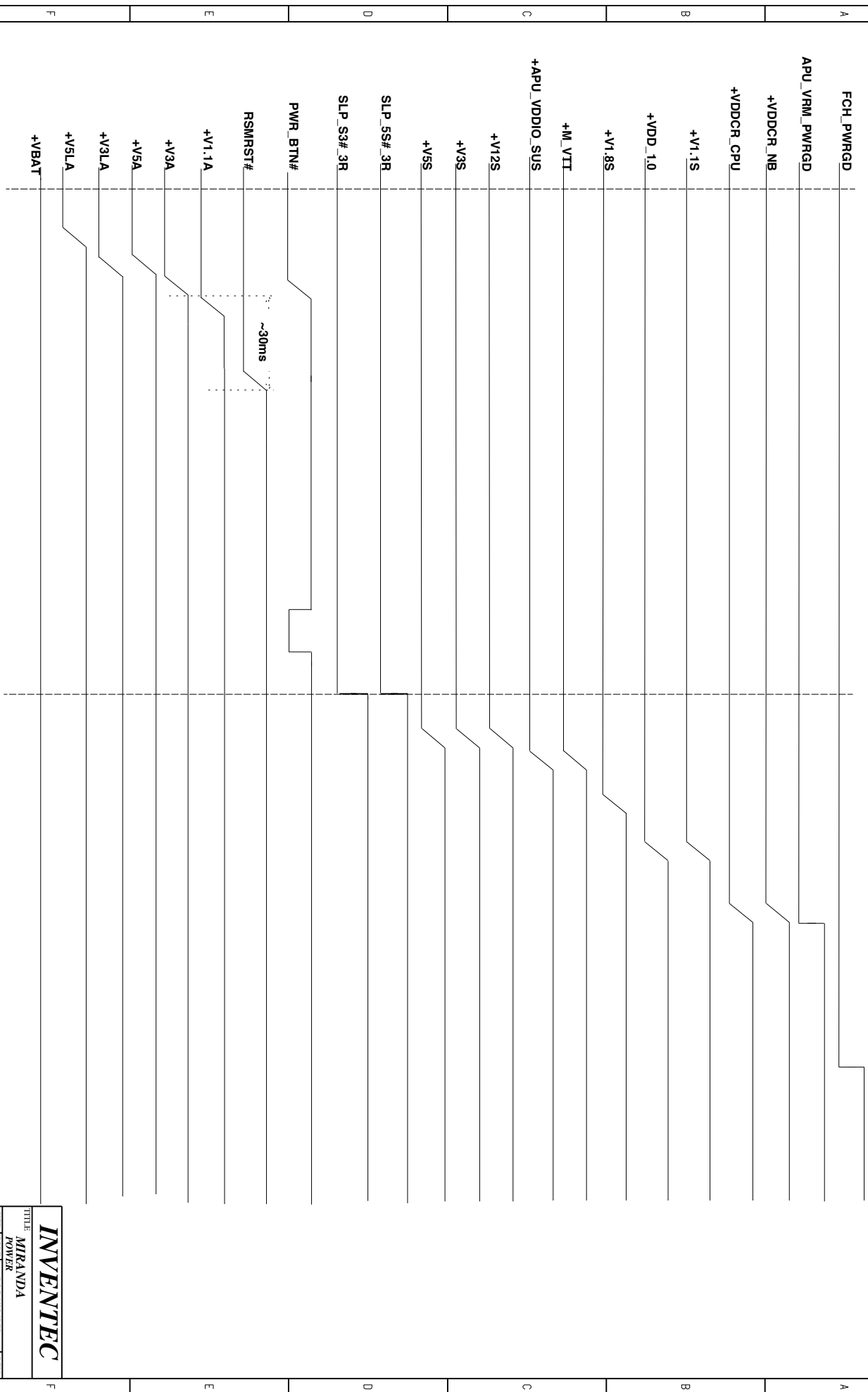
TITLE				MIRANDA			
SIZE CODE				DOC NUMBER			
A3 CS				1310AXXX3-2-MIRX01			
SHEET				2 OF 54			



# Power Block Diagram

The diagram illustrates the power supply architecture for the SC4525ASETRT. It shows the flow of power from the ADAPTER (+12V ~ +19V) through various regulators and switches to the final output voltages. Key components include the VCCORE\_VNB regulator, the TPS51218DSCR and TPS51125 regulators, and the AON7410, G2997F6U, and G5173R41U regulators. The diagram also shows the SLP\_S3#\_3R and SLP\_S5#\_3R signals and the resulting output voltages: +VCC\_CORE\_NB, +V1.5S, +V1.1A, +V3A, +V3S, +V1.8S, +V5A, +V5S, and +V12S.

POWER ON SEQ.



1	2	3	4	5	6	7	8
					CHANGED by	MS	30-Sep-2010

INVENTEC

MIRANDA

POWER

SIZE

CODE

AS

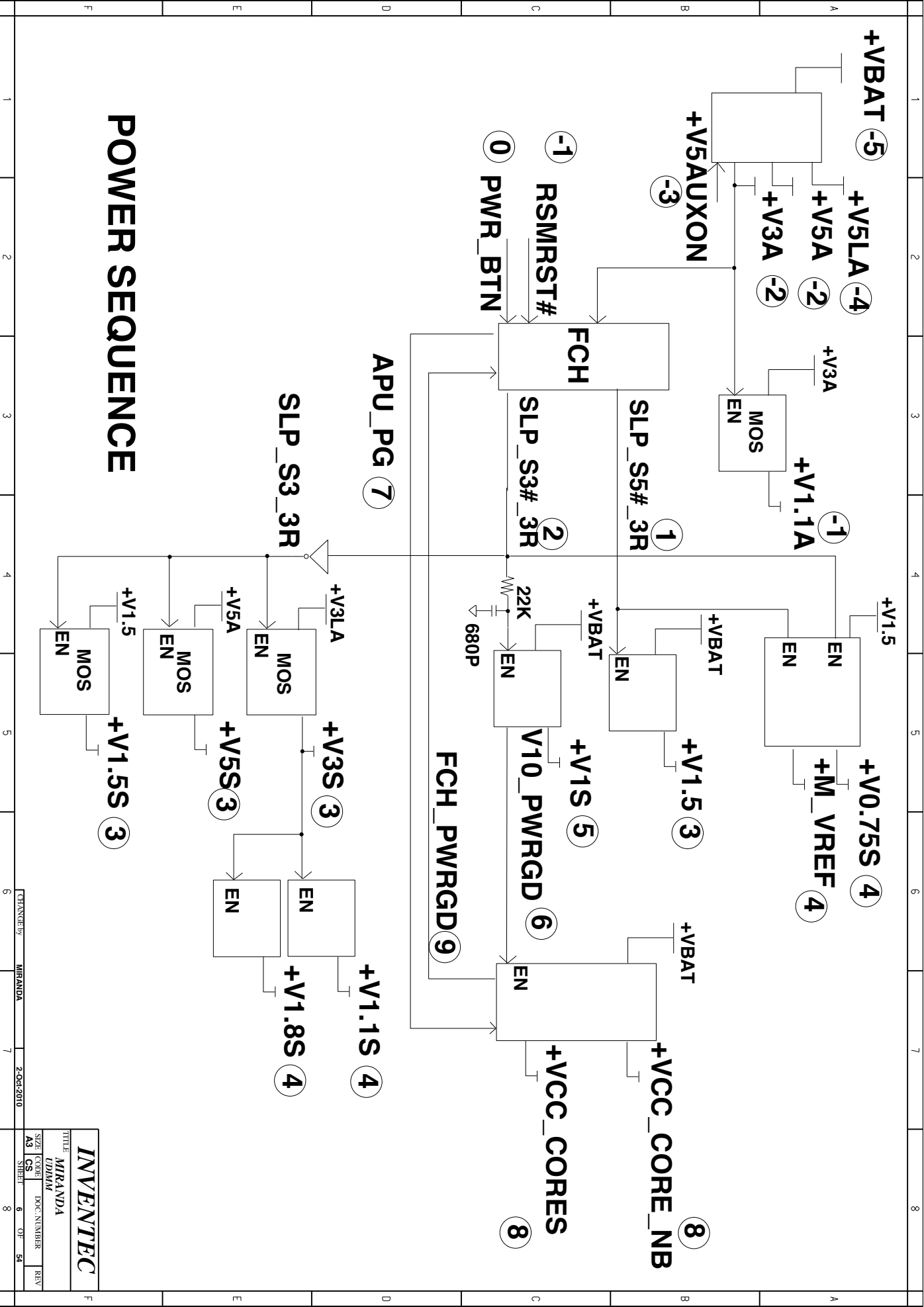
DOC:NUMBER

8

OF

REV

54









[illegible]

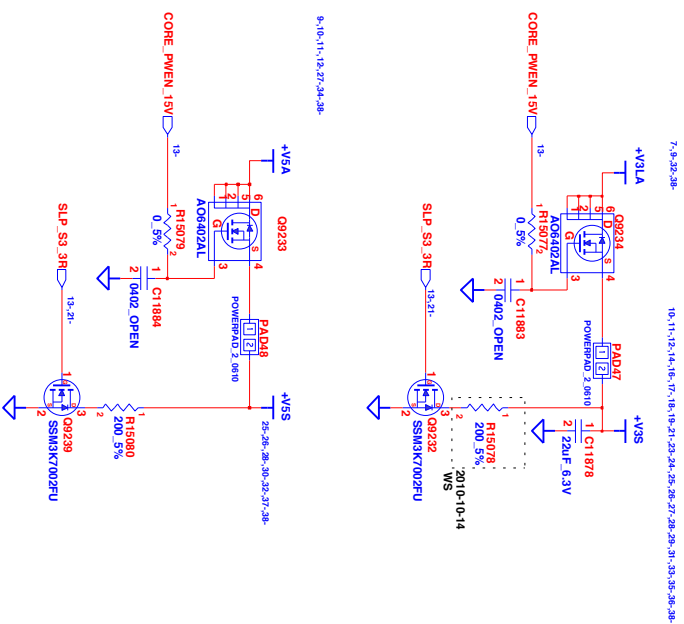


[www.vinafix.vn](http://www.vinafix.vn)



SIZE	CODE	DOC. NUMBER	REV
A3	CS		
SHEET		11	OF 54

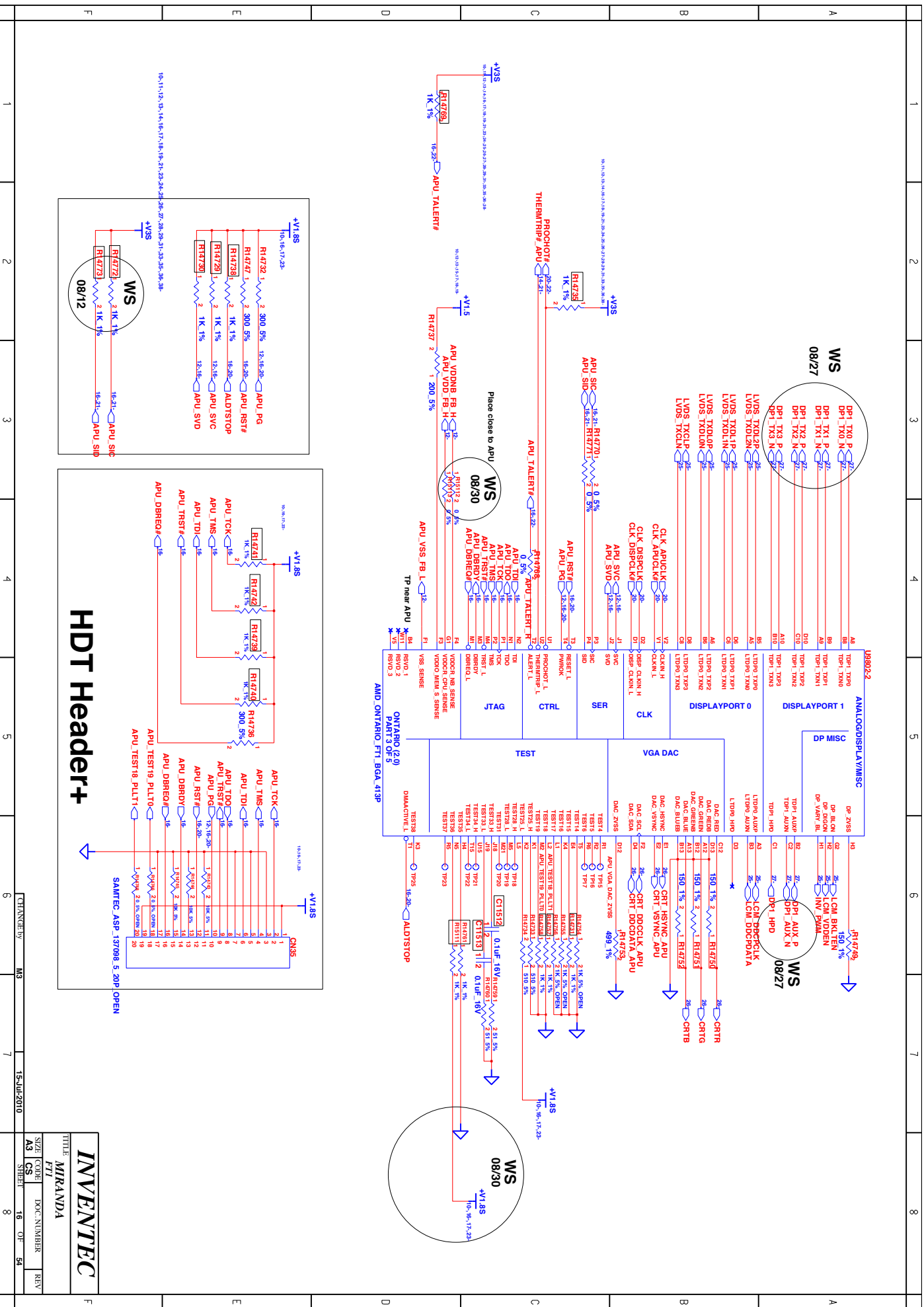




[www.vinafix.vn](http://www.vinafix.vn)









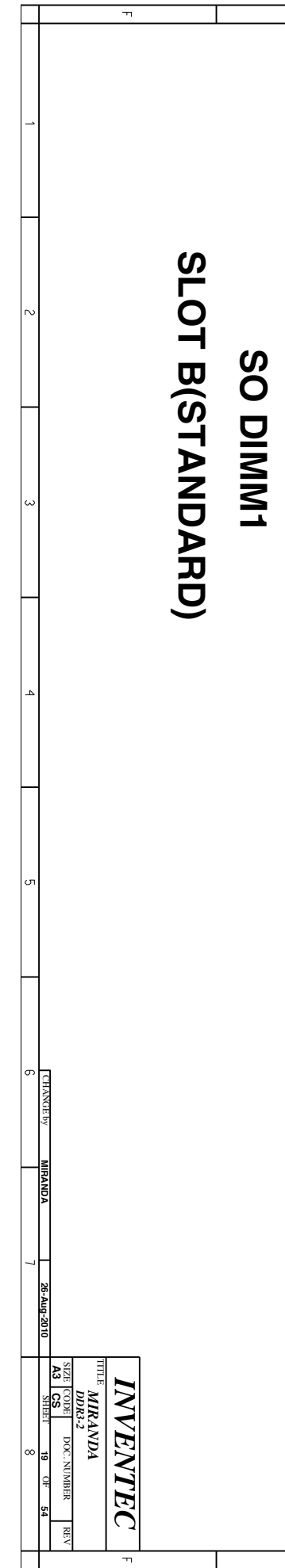
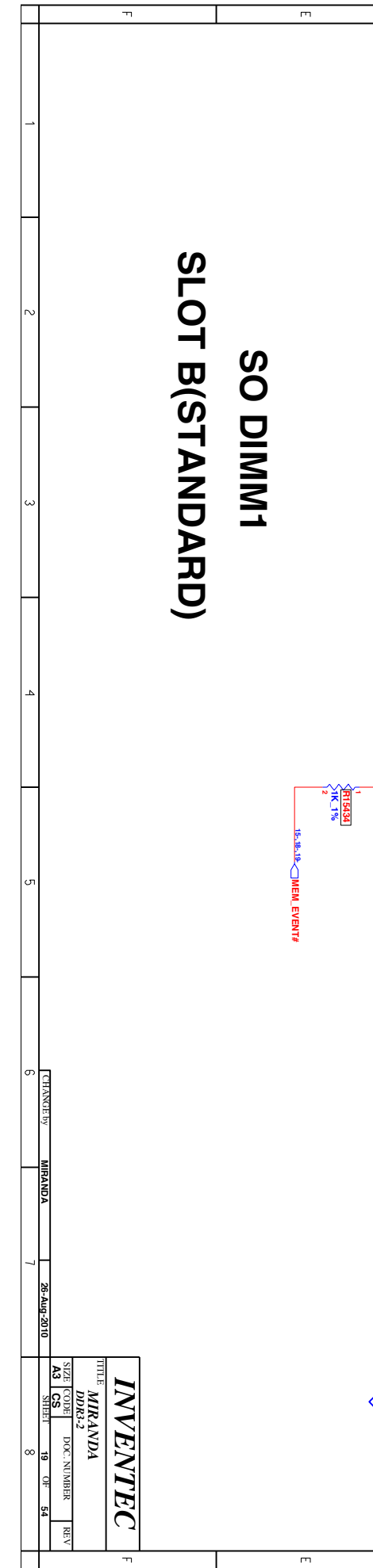


## SLOT A(REVERSE)



CHANGE BY	MIRANDA	2-Sep-2010
-----------	---------	------------

1	2	3	4	5	6	7	8
---	---	---	---	---	---	---	---

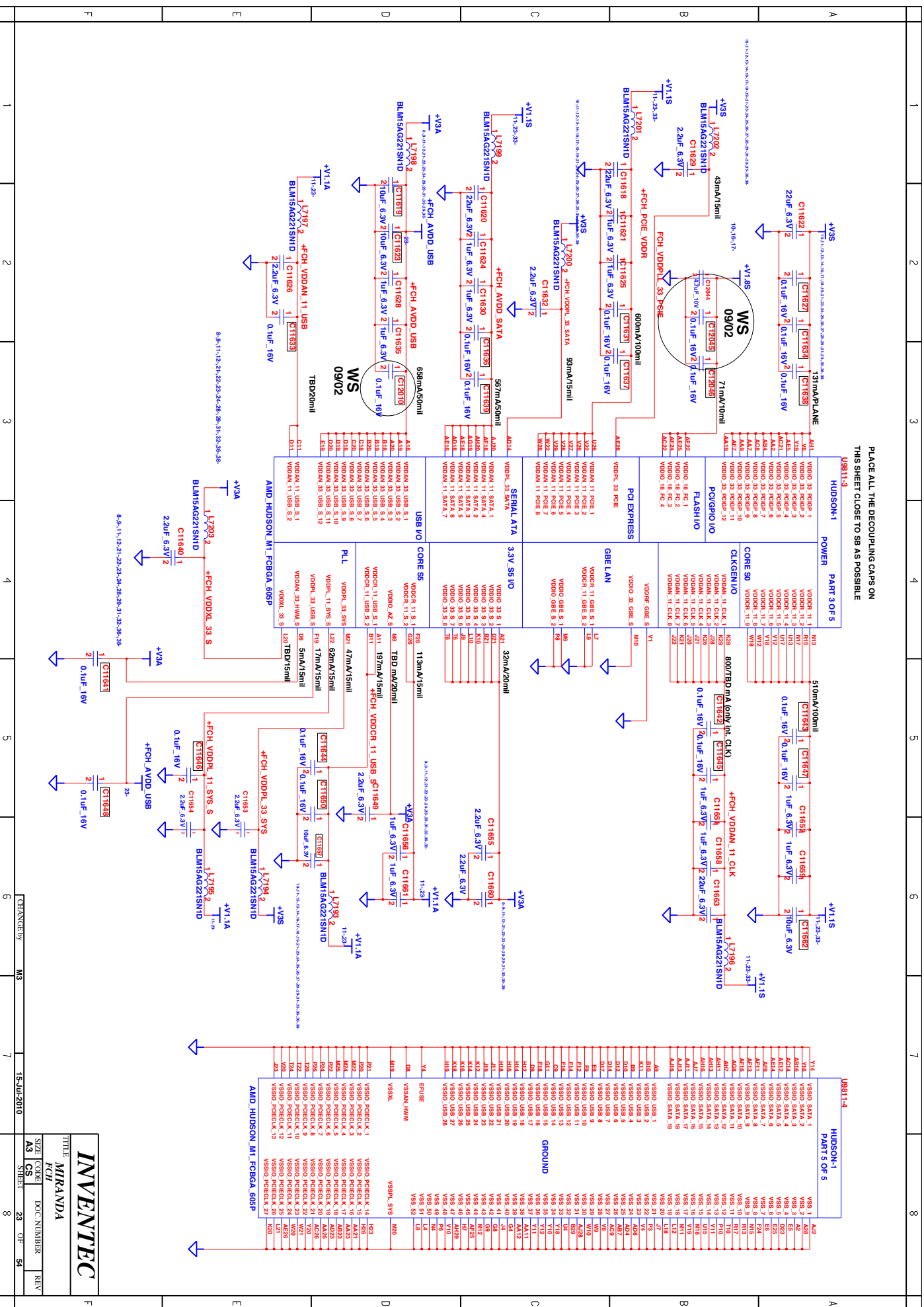


# Introduction

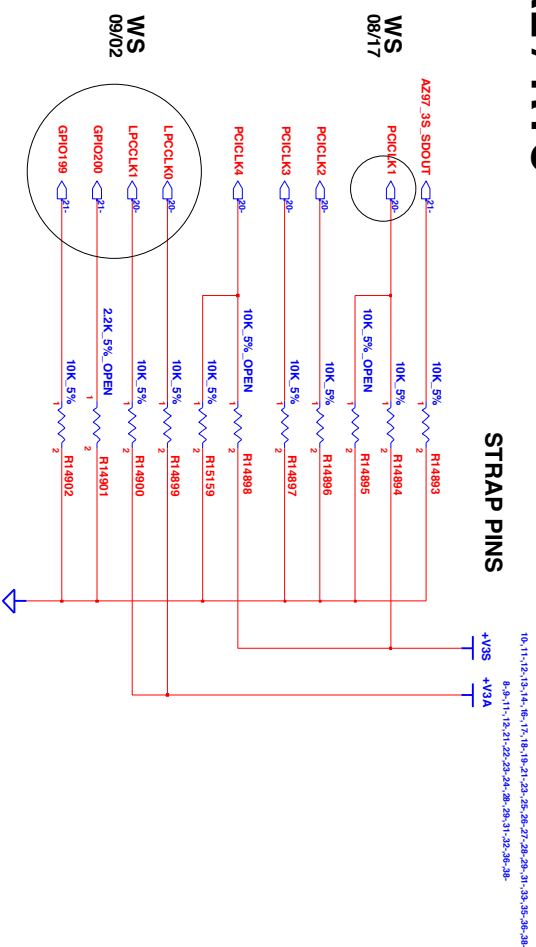




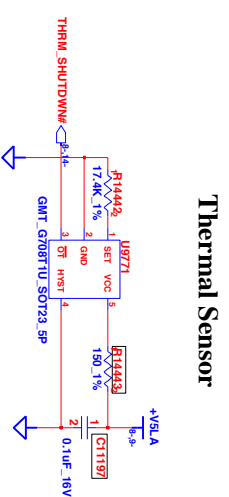
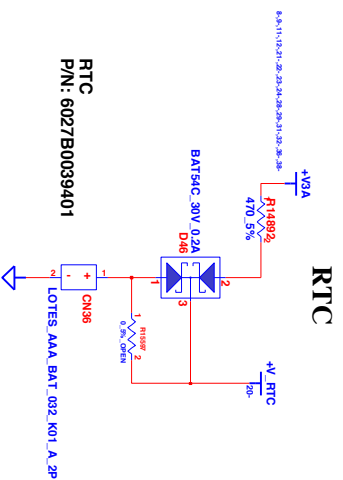




## STRAP OPTION / THERMAL / RTC



	AZ57_SS_SPDOUT	PCI CLK1	PCI CLK2	PCI CLK3	PCI CLK4	LPCLK0	LPCLK1	GPIO200 EC_PWM3	GPIO199 EC_PWM2
PULL HIGH	Low Power Mode (Not Supported)	Allow PCIe Gen2  (Default)	Watchdog Timer Enabled  (Not Supported)	Debug STRAP Enabled	Non-FUSION CLOCK Mode	Integrated Micro-Controller Enabled  (Default)	Internal Clock Generator Enabled  (Default)		
PULL LOW	Performance Mode  (Default)	Force PCIe Gen1	Watchdog Timer Disabled  (Default)	Debug STRAP Disabled  (Default)	FUSION CLOCK Mode  (Default)	Integrated Micro-Controller Disabled	Internal Clock Generator Disabled	LH= LPC ROM LL= Reserved	

CHANGE by **MIRANDA**

**MIRANDA**

2-8

**INVENTEC**

**LE  
MIRANDA**

STRAP OPTION / THERMAL / RTC

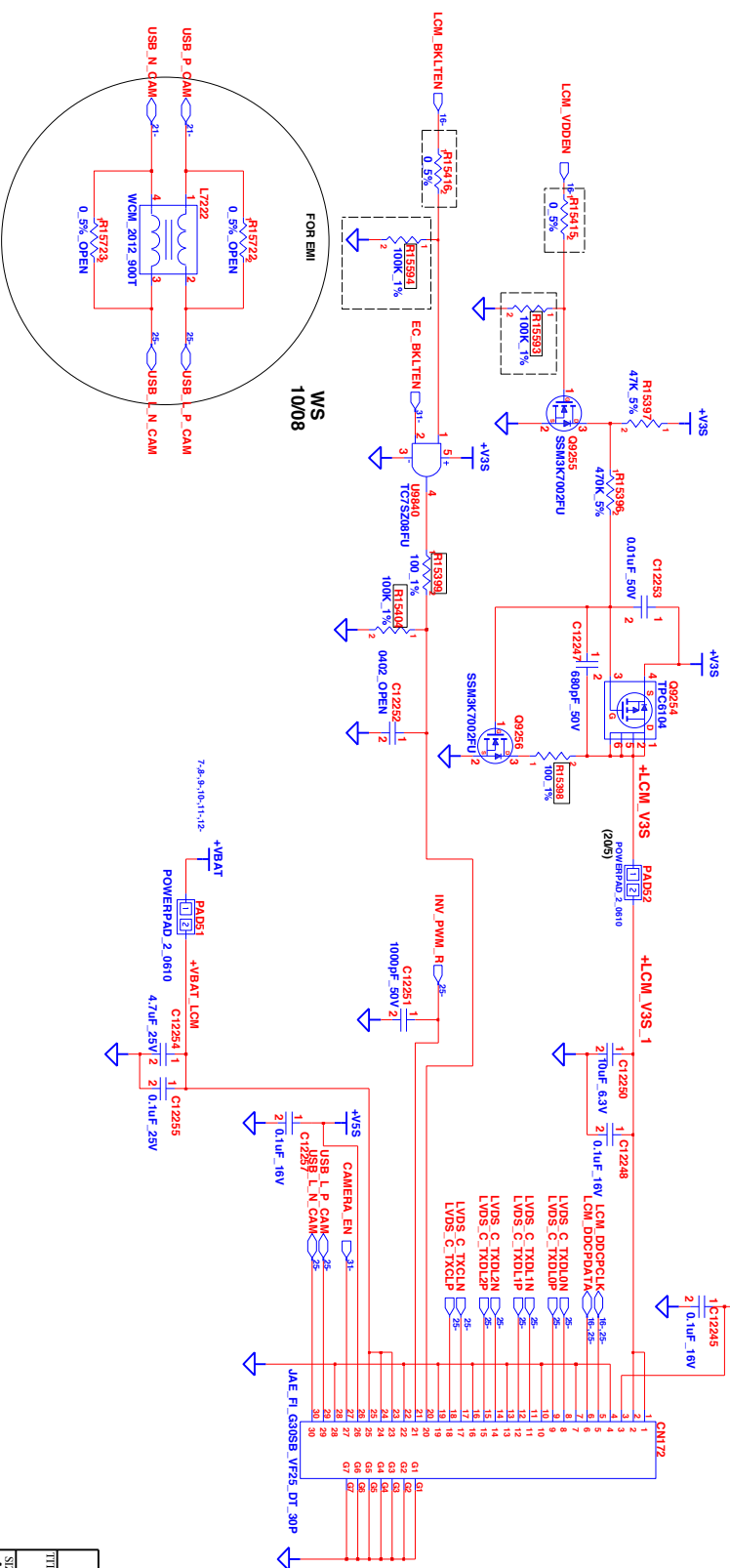
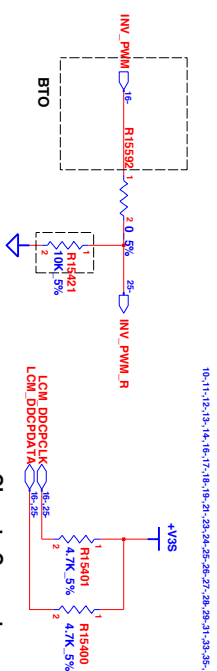
SIZE	CODE	DOC. NUMBER	REV
A3	CS		

A3 C3  
SHEET 24 OF 54



WS  
09/28

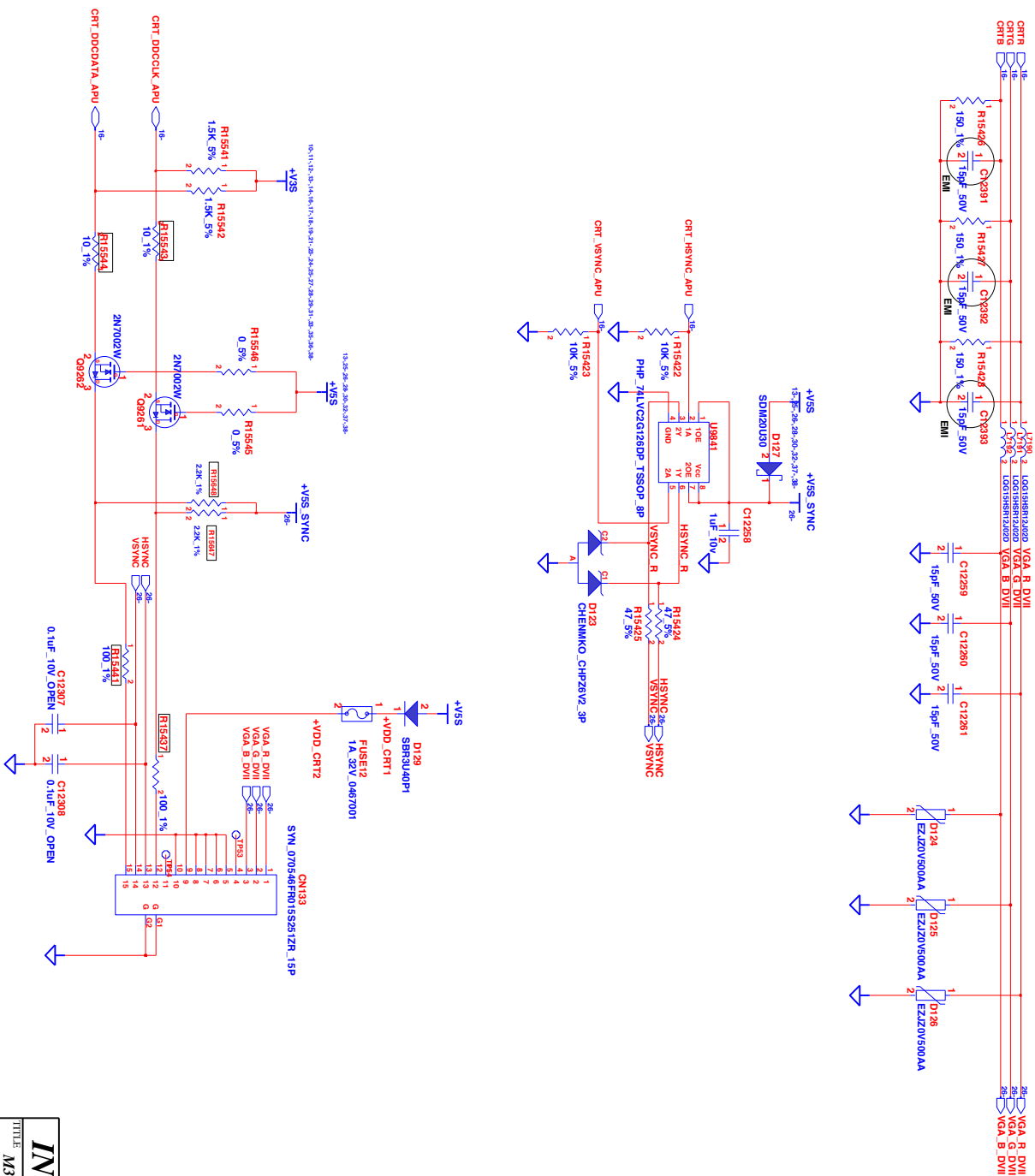
### LCM DDC PU values



CHANGE by	M3	8-Jul-2010
-----------	----	------------

<b><i>INVENTEC</i></b>			
TITLE			
<b>MIRANDA</b>			
<b><i>DY-I</i></b>			
SIZE	CODE	DOC. NUMBER	REV
<b>A3</b>	<b>CS</b>		
SHEET	25	OF	54

# CRT



**INVENTEC**

TITLE

M3

SIZE

VGA

CODE

DOC NUMBER

REV

A3

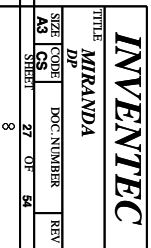
CS

START

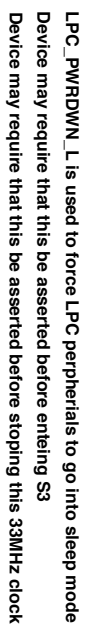
26

OF

54







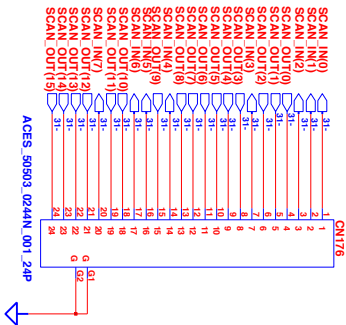
---

[illegible]

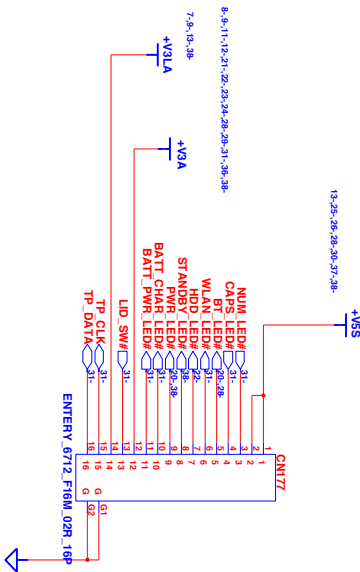


KB/TTP CONN

Keyboard Conn.



TP/B Conn. M/B SIDE



INVENTEC

MIRANDA

SIZE

CODE

CS

SHR

32

OF

54

REV

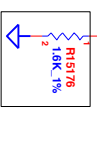
DOC NUMBER

32

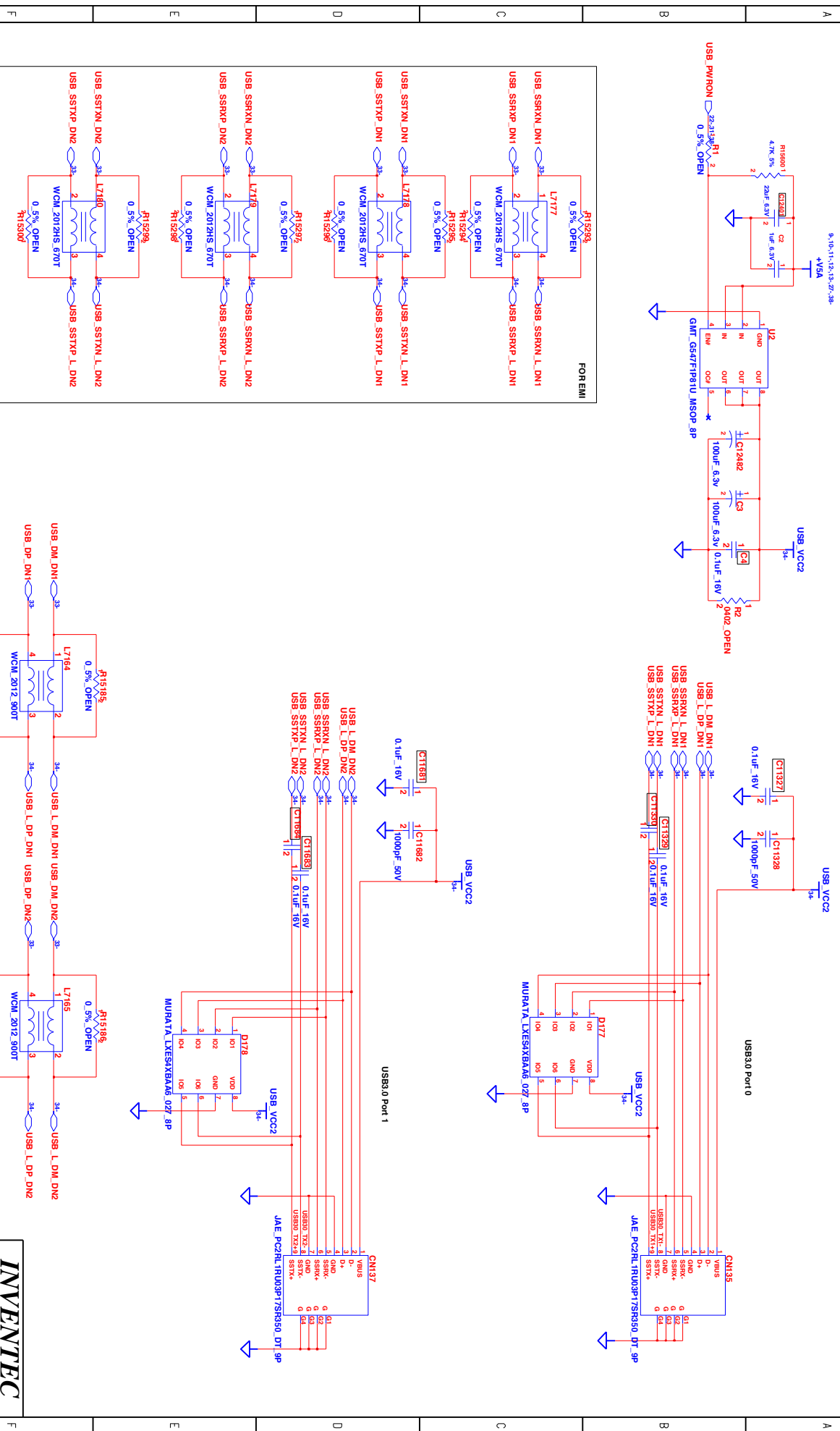
OF

54



[illegible]

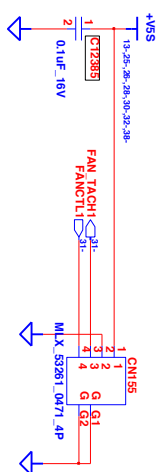
# DUAL USB 3.0 CONN



[illegible][illegible]



FAN CONN



CHANGED by MIRANDA

2-Sep-2010

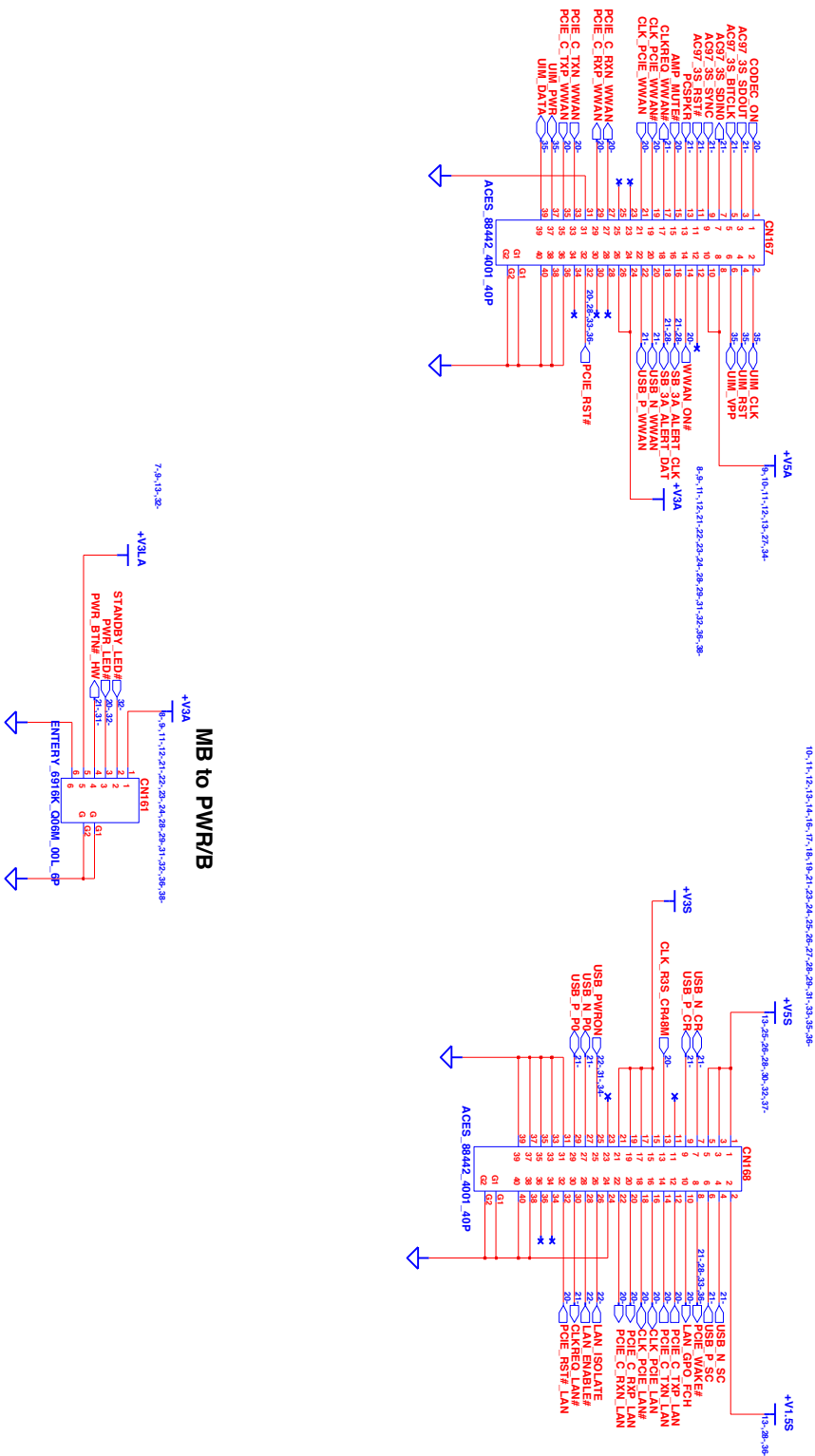
**INVENTEC**

TITLE  
**MIRANDA**

SIZE CODE  
**A3 CS**

DOC NUMBER  
**37 OF 64**

WIRE to BOARD CONN (MB SIDE)



INVENTEC

MIRANDA

RSER CARD

SIZE CODE

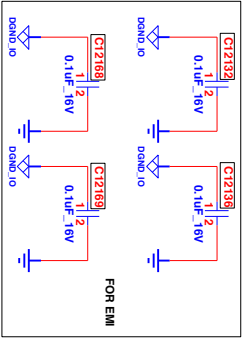
AS CS

SHR1

38 OF 54

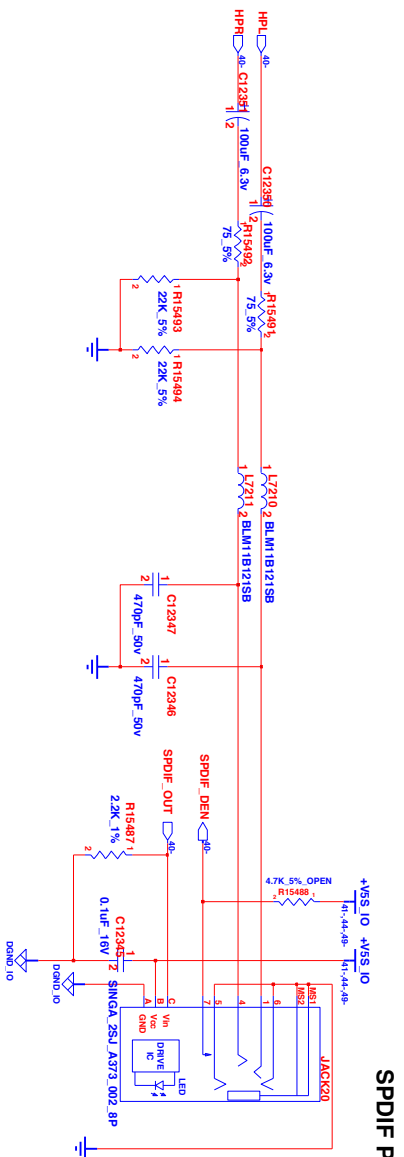
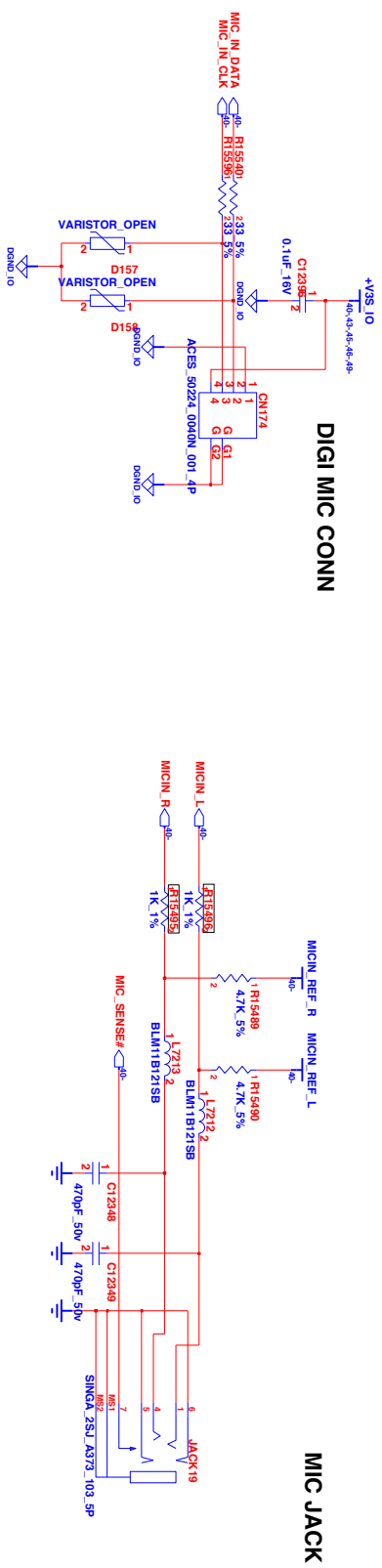


**Locate under CODEC  
use 80 mills wide trace  
bridging AGND and DGND planes**





# AUDIO JACK



**INVENTEC**

**M3**

**AUDIO JACK**

**SIZE CODE**

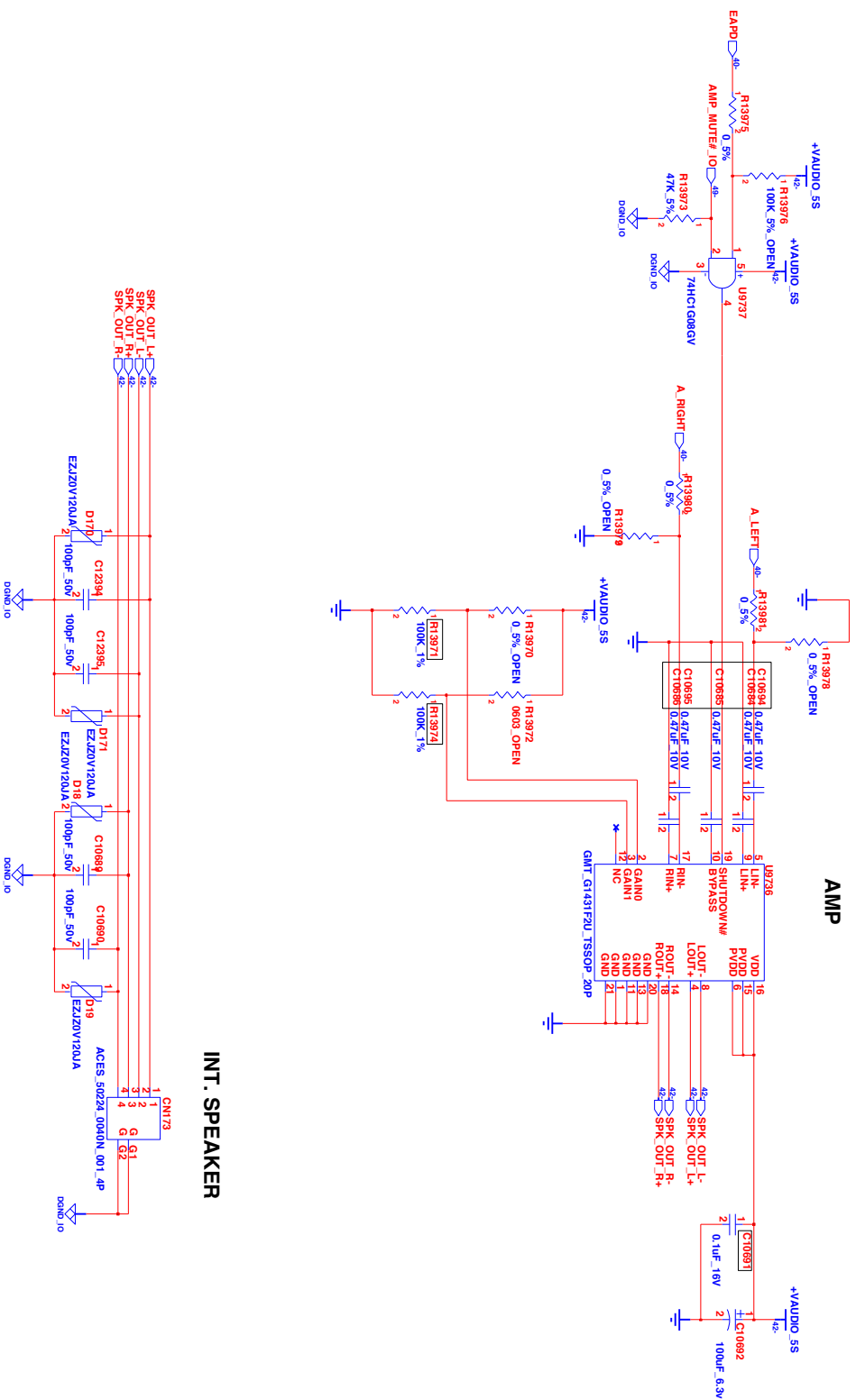
**A3 CS**

**SHR1**

**41 07 54**

## AMP / SPEAKER

**EAPD when output high, turn on OP**  
**EAPD when output low, turn off OP**

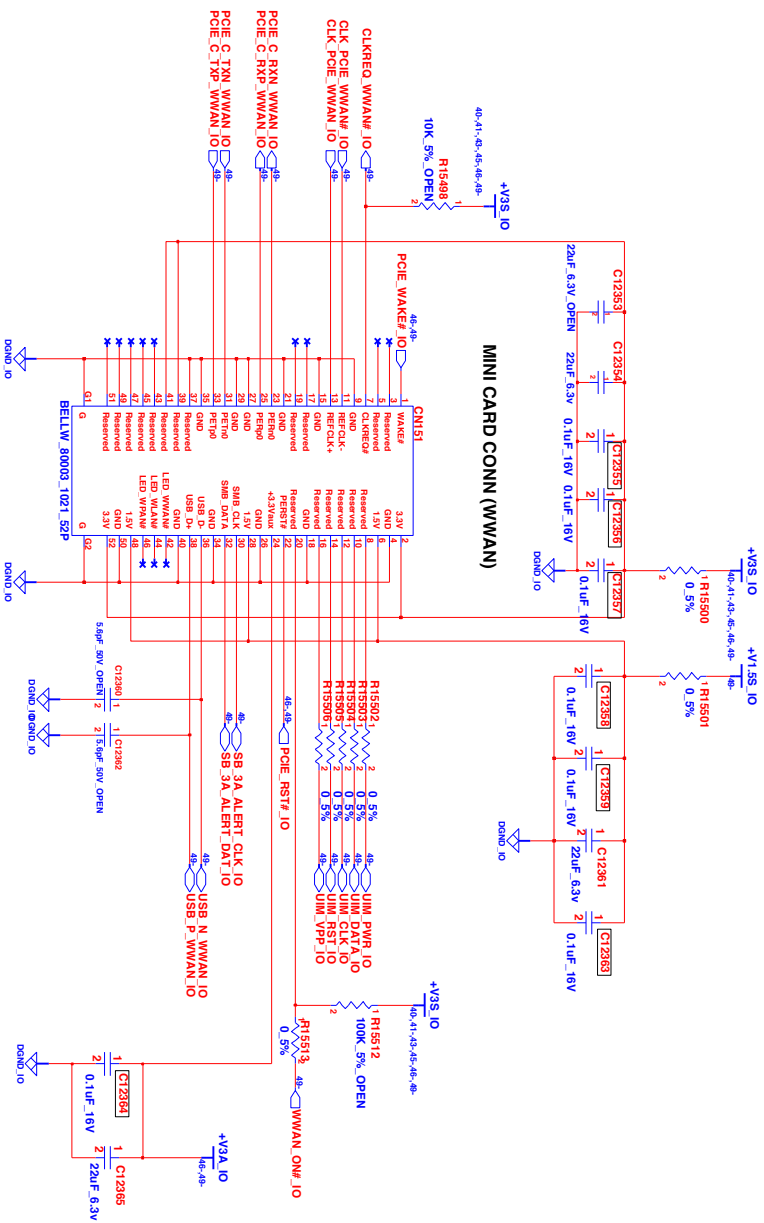


**INT. SPEAKER**

CHANGE by	M3	23-Jun-2010
-----------	----	-------------

<b>INVENTEC</b>			
TITLE <b>MIRANDA</b>			
<b>AMP/SPEAKER</b>			
SIZE	CODE	DOC. NUMBER	REV
<b>A3</b>	<b>CS</b>		
SHEET	<b>42</b>	OF	<b>54</b>

WWAN



INVENTEC

M3

WWAN

SIZE CODE

A3 CS

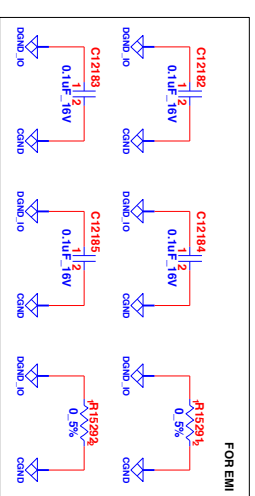
SHR1

43 OF 54

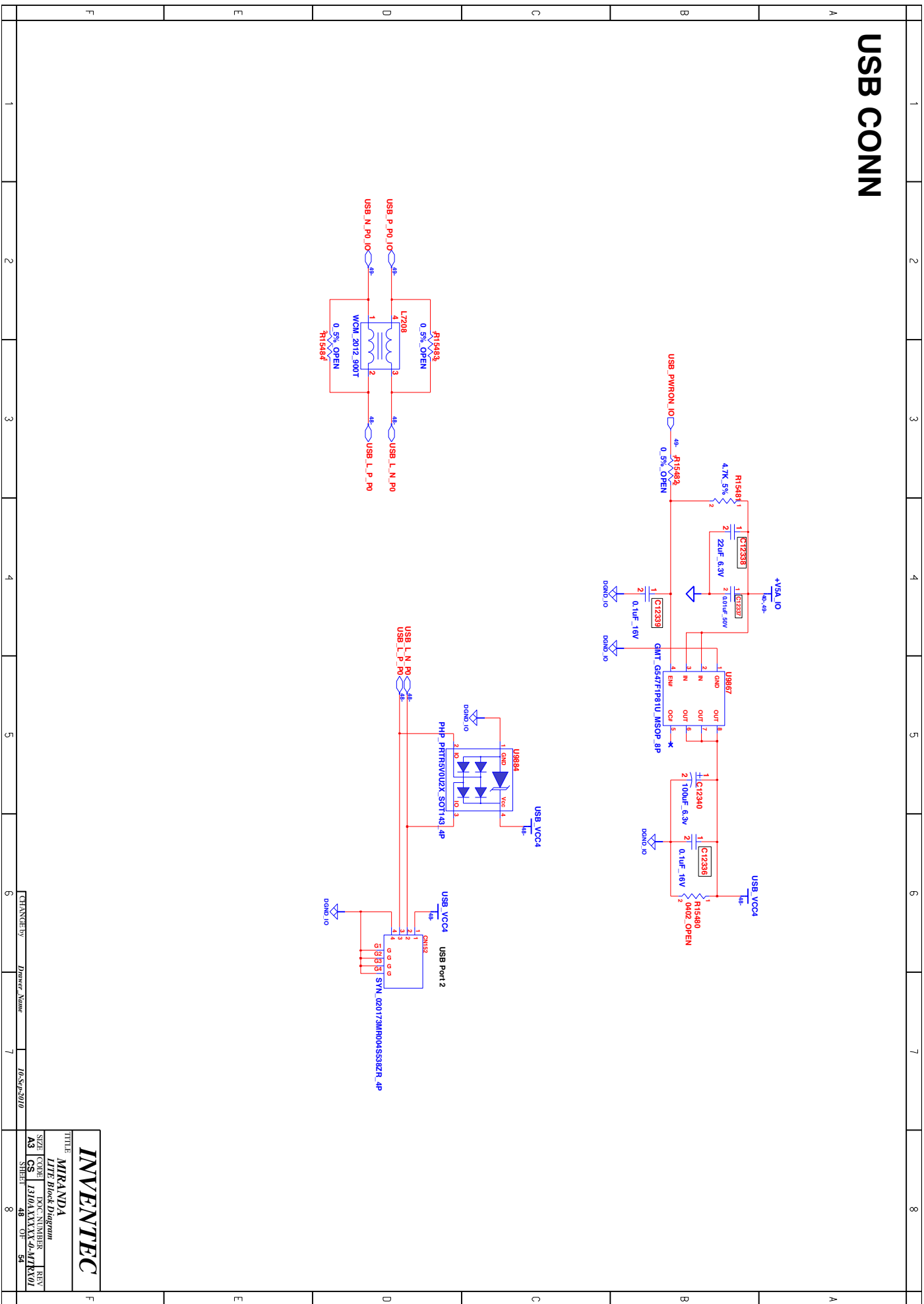
[illegible][illegible]

# USB CARD READER



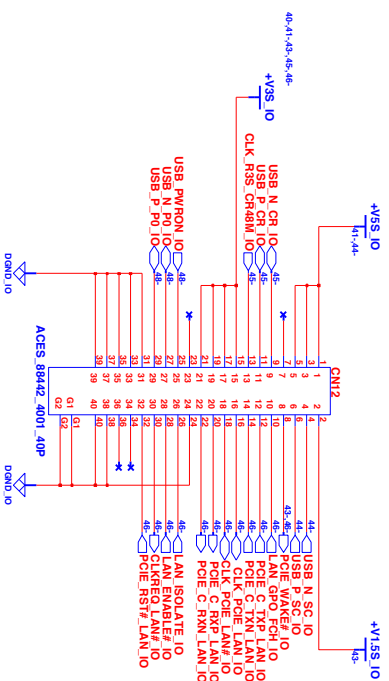
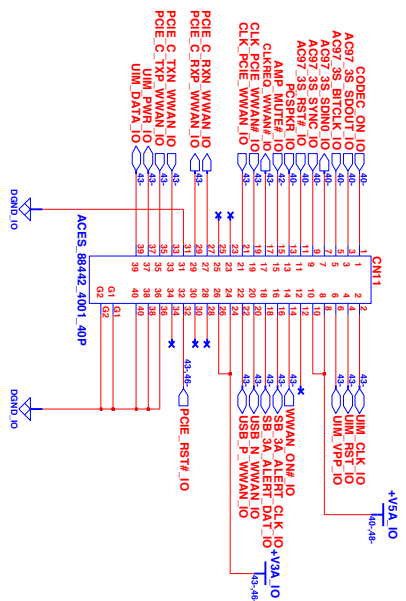
[illegible]

$\infty$	vacuum
$1/4$	

[illegible]



# WIRE TO BOARD CONN (IO/B SIDE)



**INVENTEC**

MIRANDA

DIAGRAM

SIZE CODE DOC:NUMBER REV

A3 CS 49 07 54



